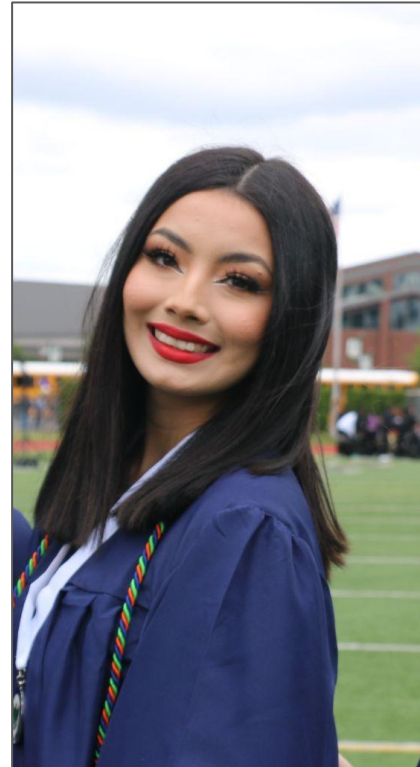


**Educational Programs  
and Operations  
Replacement Levy  
Proposition 1**



**Special Election,  
February 13, 2024**



# Community Support for Auburn School District

## **2020: Educational Programs and Operations Levy (expires 2024)**

Funds staffing and enrichment opportunities not funded by state basic education allocation.

## **2020 Technology Levy (expires 2026)**

Expansion of a 1:1 device for all students TK-12, upgraded classroom displays, updated network, surveillance cameras, innovation funds and capacity building by providing staff to support both the maintenance of the devices and coach teachers.

## **2016: Building for Learning Bond**

Bond built two new elementary schools and rebuilt six existing schools.





# 2020 Technology Levy

Expanding

Building  
Capacity

Supporting  
Innovation

Maintaining



Innovation funds  
for schools



Upgraded  
classroom  
displays in all  
schools



Wireless network  
in all schools



Network  
upgraded to 10G  
capacity



1:1 Chromebooks  
in K-1  
classrooms



Additional  
technical support  
personnel



Specialized  
devices for  
special education



1:1 Chromebook  
program for  
grades 2-12



Additional  
instructional  
technology staff



Chromebook  
availability in  
preschool  
classrooms



More  
professional  
training for staff



Tech equipment  
for growth  
facilities











***Our Mission: In a culture of equity and excellence we engage, educate, and empower each student for success beyond graduation.***

**Bonds are for  
*Building*  
Levies are for  
*Learning***



# Educational Programs & Operations Replacement Levy Funding

| Staffing Area                     |   | Funded by State | Actual # in ASD |
|-----------------------------------|---|-----------------|-----------------|
| Safety Officers                   |  | 3               | 13              |
| School Resource (Police) Officers |  | 0               | 3               |
| School Psychologists              |  | 1.2             | 18              |
| School Nurses                     |  | 10              | 16              |
| Librarians & Library Techs        |  | 22.6            | 39              |
| Family Engagement Staff           |  | 1.9             | 21*             |

*\*5 positions funded by the levy, 14 positions funded by other sources*

*(Above chart does not include all levy-funded positions.)*

**Special Education not funded by the state = \$12 million**

- Building maintenance
- Transportation costs
- Teaching supplies (textbooks, library books)
- Extended day learning
- Extended year learning





# Educational Programs and Operations Replacement Levy

- 4-year levy
- \$2.50 rate per \$1,000
- Projected assessed valuation increase of 5% growth per year

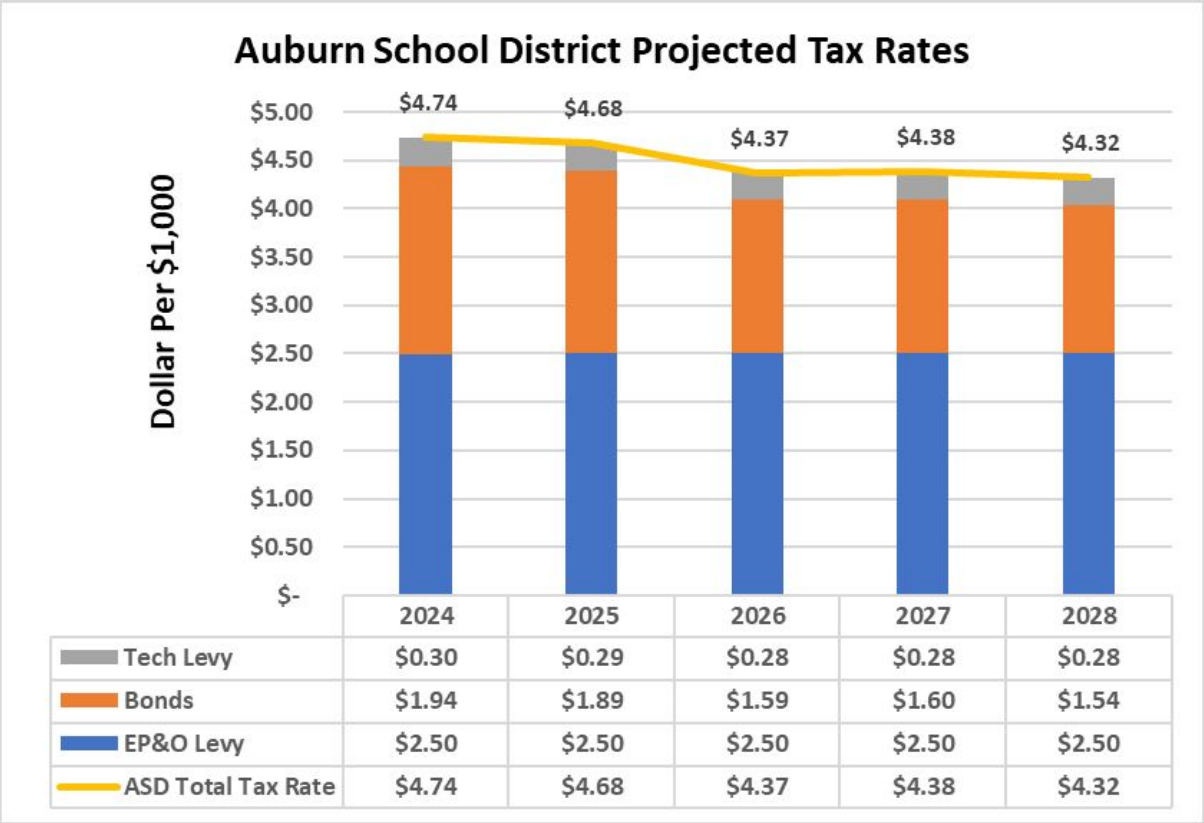


| TAX YEAR | RATE PER \$1,000 | PROJECTED AMOUNT |
|----------|------------------|------------------|
| 2025     | \$2.50           | \$51,841,820     |
| 2026     | \$2.50           | \$54,433,911     |
| 2027     | \$2.50           | \$57,155,606     |
| 2028     | \$2.50           | \$60,013,386     |



# Level Tax Rate

The ASD strives to keep the tax rates stable.



**Note:** 2027 & 2028 projected tax rates assume continuation of a technology levy.

The technology levy will need to be renewed in 2026.

**Remember  
to Vote by  
February 13!**



Connect with us on social media:

Facebook



[www.facebook.com/auburnschools](https://www.facebook.com/auburnschools)

Instagram



@auburnschool district

If you have questions, please contact Associate Superintendent of Business & Operations, Cindi Blansfield. 253-931-4930.  
Please mail your ballot by February 13, 2024. Email: [levy2024@auburn.wednet.edu](mailto:levy2024@auburn.wednet.edu)